

# Using the Lightroom to Pictage Plug-in

Pictage

# Downloading The Plug-in

**Pictage** Studio Home Products & Services Community My Folders Support New member? Get started

PRODUCTS & SERVICES **Services** [View all products](#)

Streamline your workflow and take advantage of immediate time savings.

- Print Products
- Proof Products
- Albums & Books
- Services**
- Marketing
- Consumer Products

COMMUNITY

- Pictage User Groups (PUGs)
- Events
- Forums
- PictageTV

SUPPORT

- Best Practices
- Getting Started
- Support Topics
- Contact Us
- FAQs
- Forms

POLICIES

- Membership Benefits
- Turn Around Times
- Billing
- Shipping
- Other Policies

**Free Album Design Service**

**Free Color Correction**

**Online Proofing**

**Free Payment Plans (P<sup>3</sup>)**

**Major Retouching**

**Pictage Directory Listing**

**FTP Image Downloads**

**Film Scanning & Processing**

**Framing**

**EZ-Link**

**Special Services**

**Aperture Plug-in**

**Lightroom Plug-in**

# Downloading The Plug-in



## PRODUCTS & SERVICES

- ▶ Print Products
- ▶ Proof Products
- ▶ Albums & Books
- ▶ Services
- ▶ Marketing
- ▶ Consumer Products

## COMMUNITY

- ▶ Pictage User Groups (PUGs)
- ▶ Events
- ▶ Forums
- ▶ PictageTV

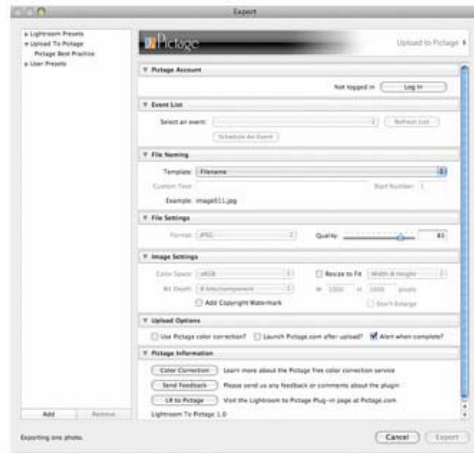
## SUPPORT

- ▶ Best Practices
- ▶ Getting Started
- ▶ Support Topics
- ▶ Contact Us
- ▶ FAQs
- ▶ Forms

## POLICIES

- ▶ Membership Benefits
- ▶ Turn Around Times
- ▶ Billing
- ▶ Shipping
- ▶ Other Policies

[◀ view all products](#)



[Send us your feedback](#)

## Lightroom to Pictage Plug-in

The Lightroom to Pictage Plug-in streamlines your workflow by making image transfers between Adobe Photoshop Lightroom and Pictage easier than ever.

### Enjoy the following benefits:

- ✓ Seamless upload to Pictage via an integrated
- ✓ Create Pictage categories on the fly using Lightroom keywords
- ✓ Schedule and upload new events or upload to existing events directly from the plug-in

PC

**Download for PC** (Version: 1.0 - 6Mb)

- Lightroom Version 1.4 [.ZIP](#) or [.EXE](#)
- Lightroom Version 1.3 [.ZIP](#) or [.EXE](#)

**Download for Mac** (Version: 1.0 - 1.3Mb)

- [All versions of Lightroom for Mac \(.ZIP\)](#)

Right-click and "Save As" on the links above

Mac

Details

Install Instructions

How To's

FAQs

## Details

### Minimum System Requirements:

#### MAC:

- Lightroom Version 1.3 or higher
- OS X Version 10.4 or higher

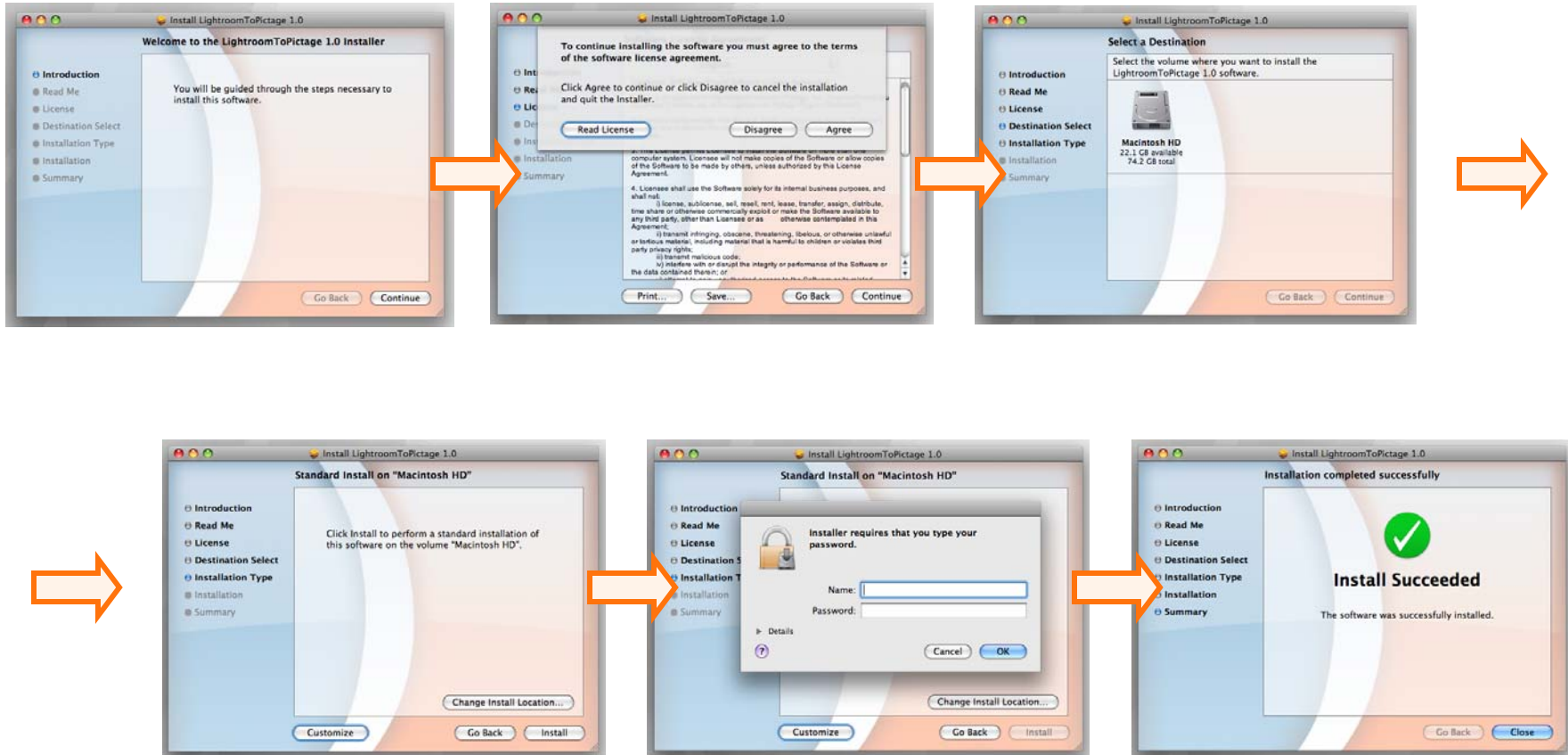
#### PC:

- Lightroom Version 1.3 or higher
- Windows XP (with Service Pack 2) or Windows Vista (Home Premium, Business, Ultimate, or Enterprise 32-bit)

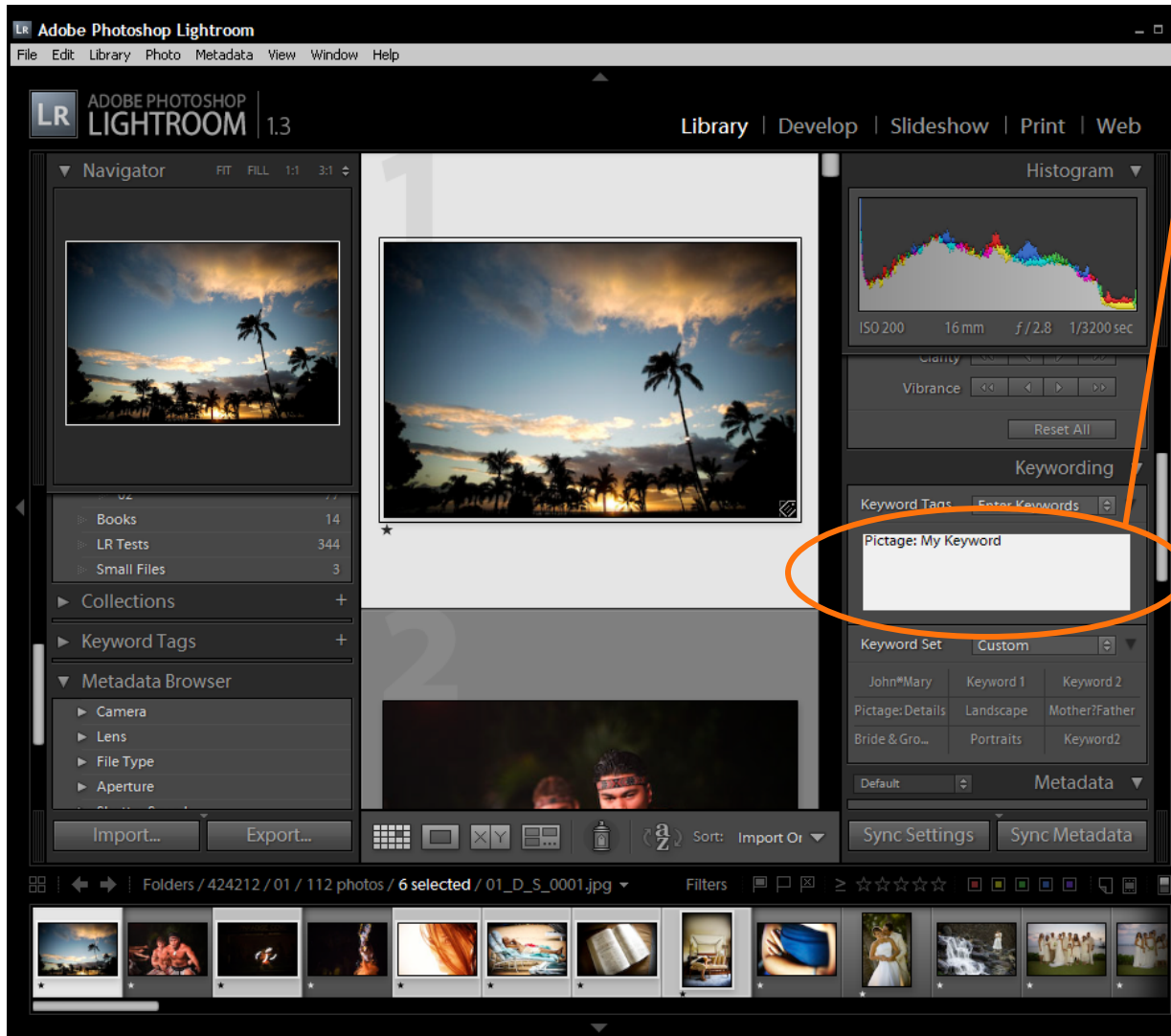
pictage



# Installing The Plug-in (MAC)



# Categorize



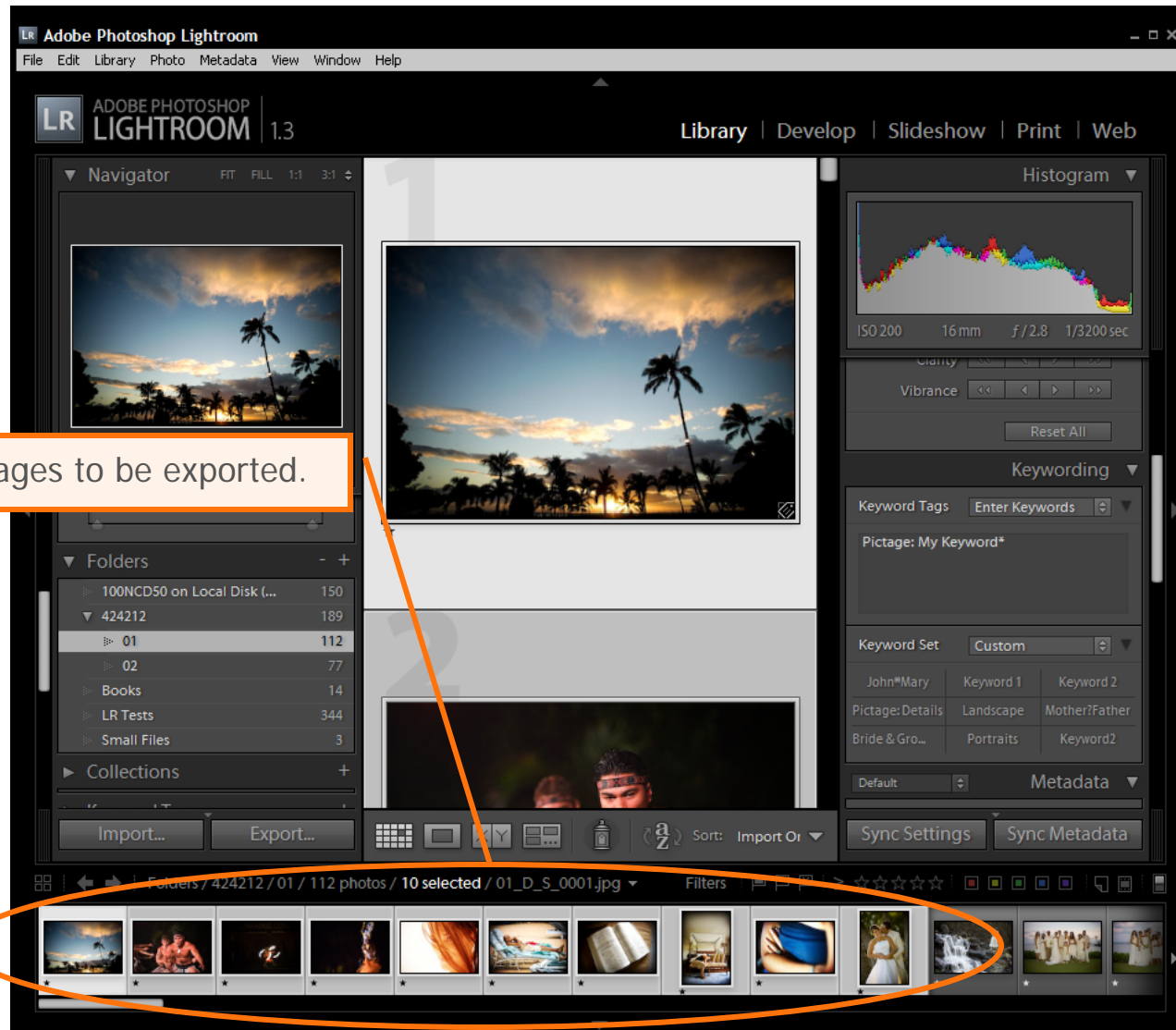
## Keywords = Pictage Categories

You can assign keywords to your images which will show up as Pictage categories once the event is uploaded.

Tips:

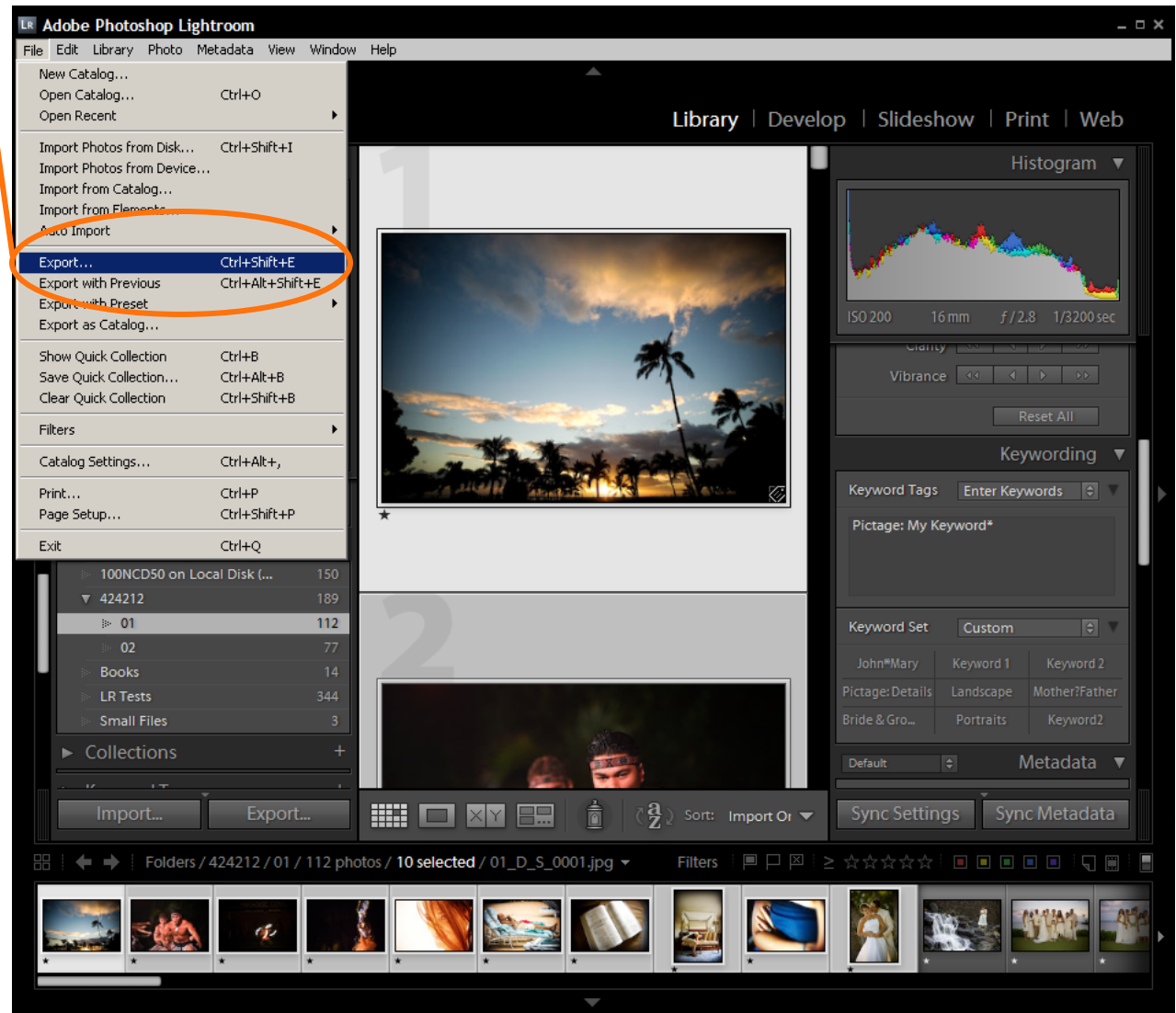
- 1) If an image has multiple keywords, use the term "Pictage: X", where 'X' is your keyword. This will ensure that your image will be assigned the 'X' category
- 2) You can select multiple images (CTRL+click on PC / Command+click on MAC) and assign a keyword to them all at once

# Select Images for Export

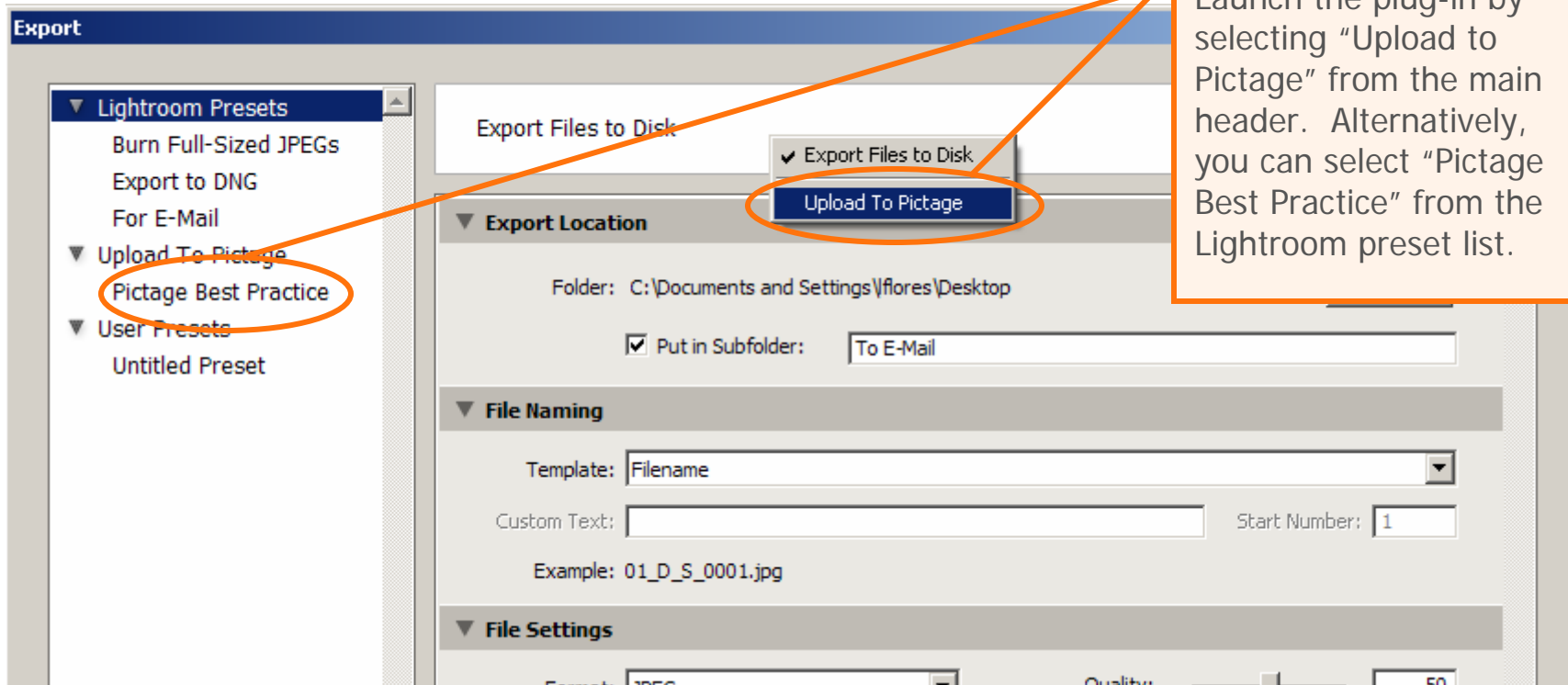


# Export

Select "File" from the top menu then choose "Export..." Alternatively, you can right-click (PC) or command-click (MAC) the selected images then choose "Export."

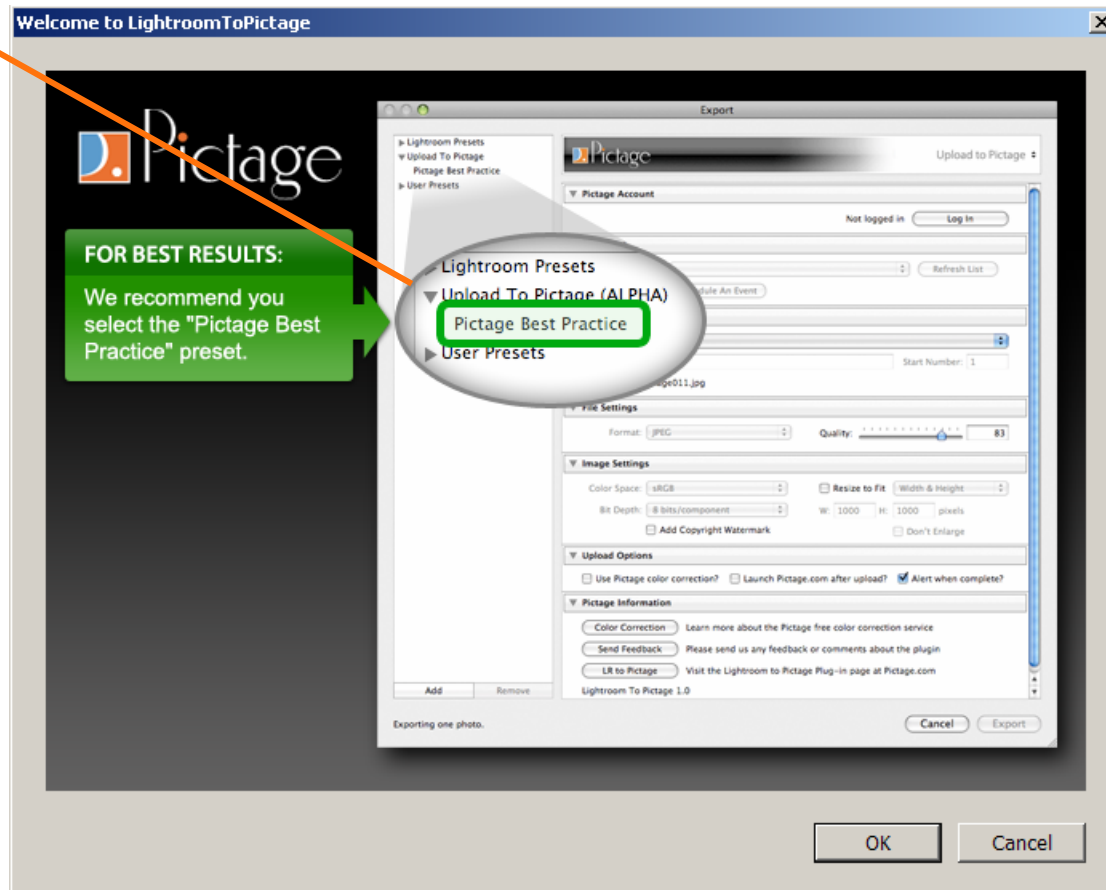


# Launching The Pictage Plug-in

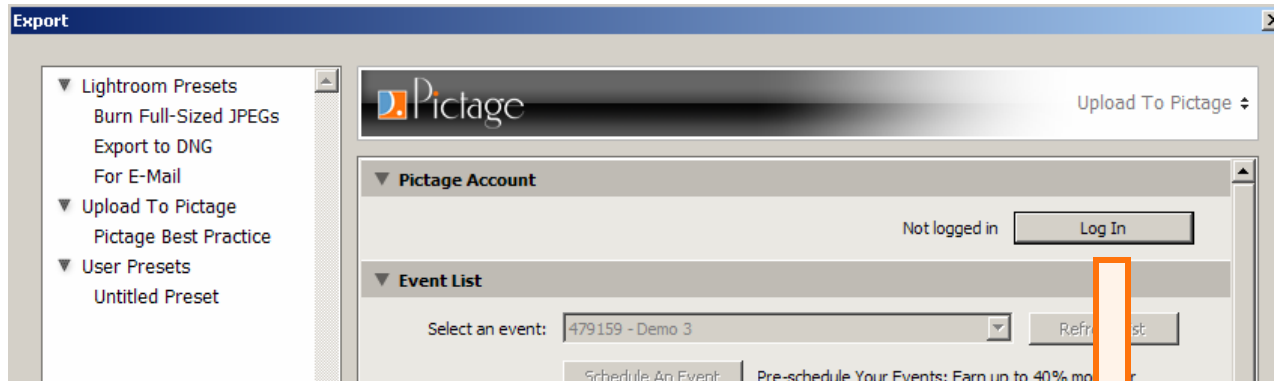


# Pictage Best Practice

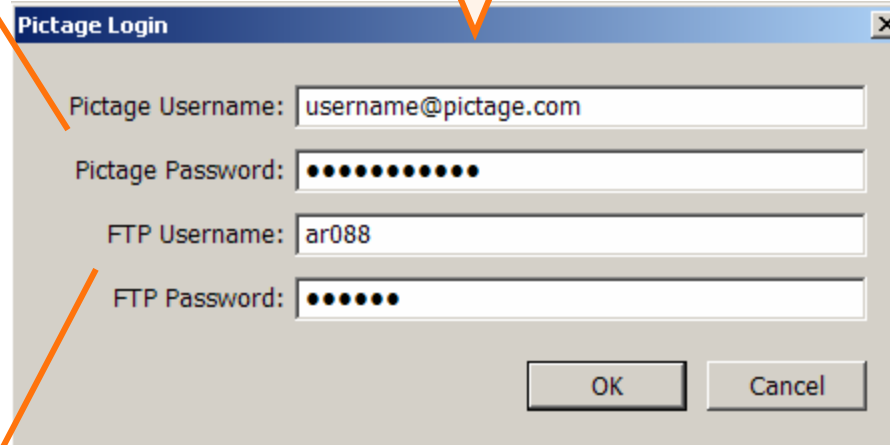
The "Pictage Best Practice" defaults your export settings to our lab-suggested values.



# FTP Log-in

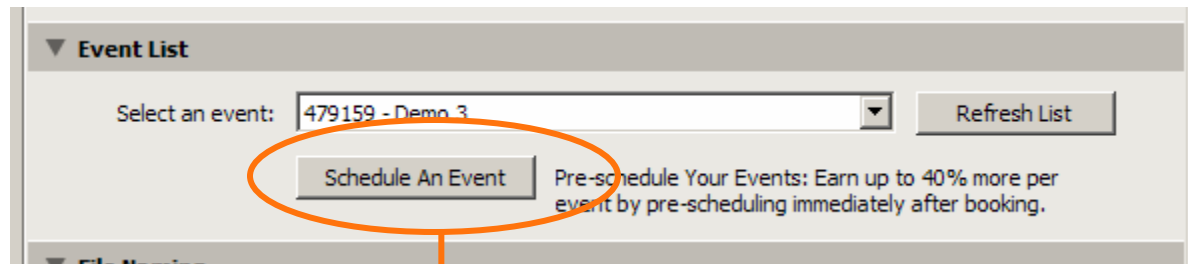


Studio (web) log in.



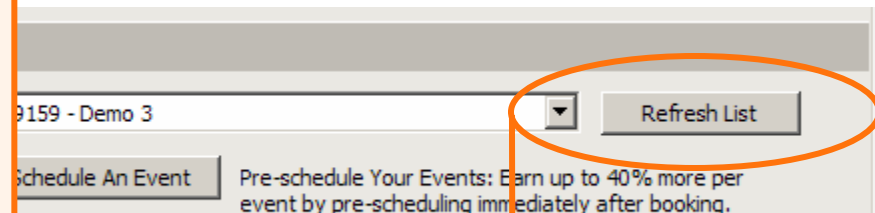
FTP log in.

# Schedule Event



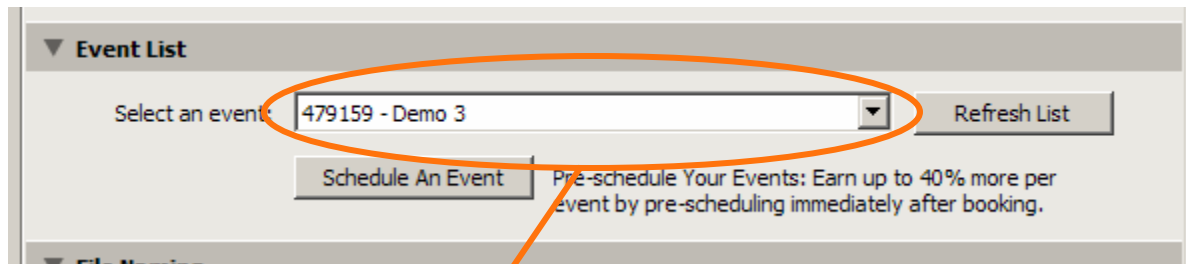
Step 1) If you do not have any available events, you may schedule an event by selecting the "Schedule An Event" button. This will launch the Schedule Event Page using your default web browser.

**Important: We highly recommend that you pre-schedule your events. You can earn up to 40% more per event by pre-scheduling immediately after booking.**



Step 2) Select "Refresh List" after scheduling your event.

# Select Event



▼ **Event List**

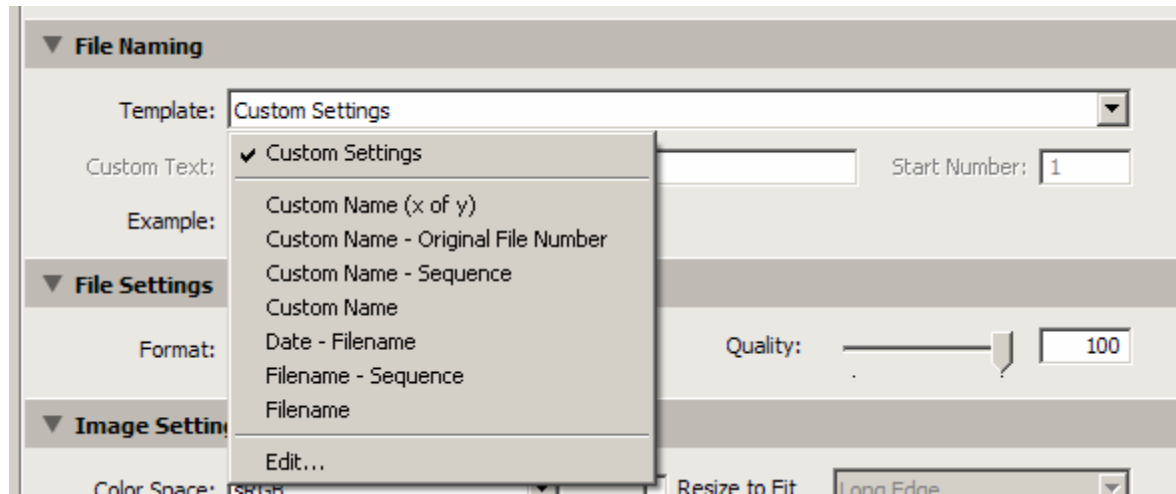
Select an event: 479159 - Demo 3 ▼ Refresh List

Schedule An Event Pre-schedule Your Events: Earn up to 40% more per event by pre-scheduling immediately after booking.

▼ File Manager

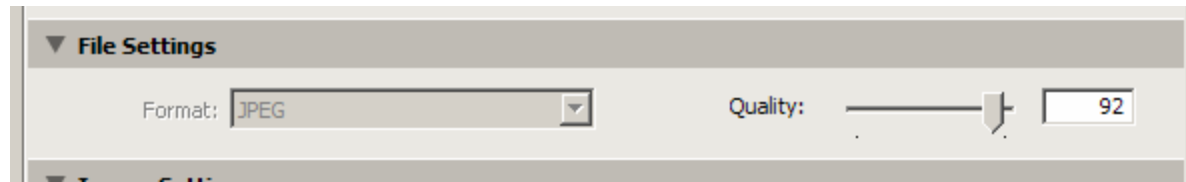
Select the event you want to upload to using the "Select an event:" dropdown.

# Options: File Sequencing



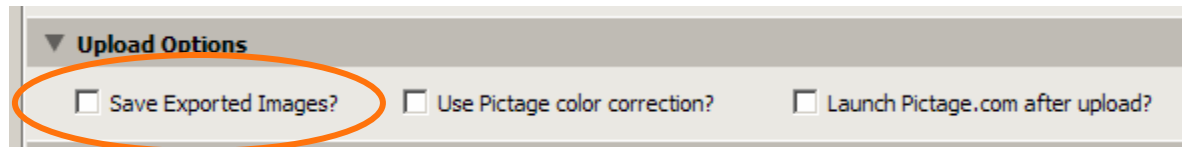
The Pictage system arranges your images by the filename that was sent to us. For example, image001.jpg will come before image002.jpg. Using the file sequencing options/presets, you can create any filename format. By creating filenames that follow the format – (Date)(Hour)(Minute)(Second), your images will be organized by date & time. That is, 20080101082345.jpg corresponds to January 1, 2008 at 8:23:45 AM.

# Options: Image Quality

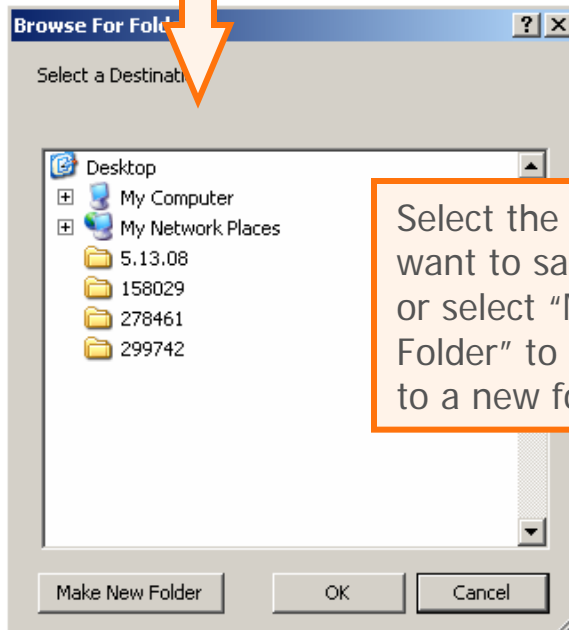


You can set the image quality of your exports using the "Quality" slider.

# Options: Save Exported Images



Select this option if you want to create a copy of your exported images.



Select the folder you want to save the copy to or select "Make New Folder" to save the copy to a new folder.

# Options: Pictage Color Correction

▼ **Upload Options**

Save Exported Images?  Use Pictage color correction?  Launch Pictage.com after upload?

Select this option if you want to use Pictage's Color Correction service.

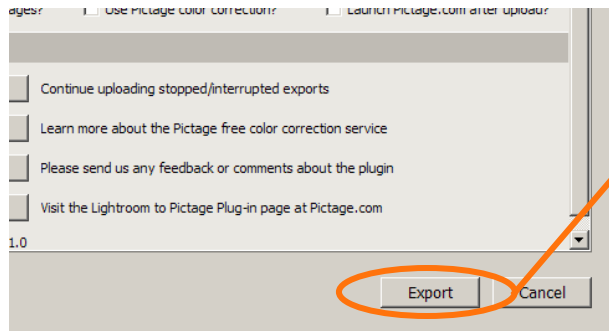
▼ **Miscellaneous**

<a href="#">Continue Previous</a>	Continue uploading stopped/interrupted exports
<a href="#">Color Correction</a>	Learn more about the Pictage free color correction service
<a href="#">Send Feedback</a>	Please send us any feedback or comments about the plugin
<a href="#">Check for Updates</a>	Visit the Lightroom to Pictage Plug-in page at Pictage.com

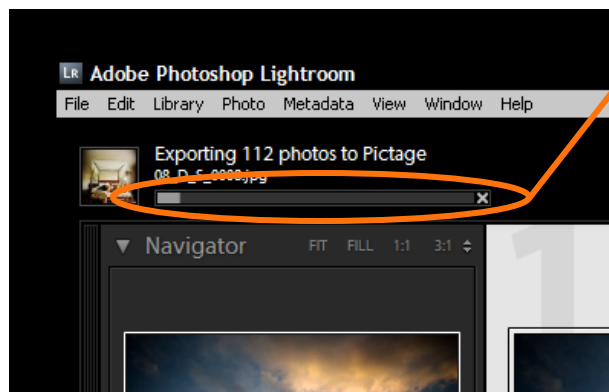
Lightroom To Pictage 1.0

Pictage

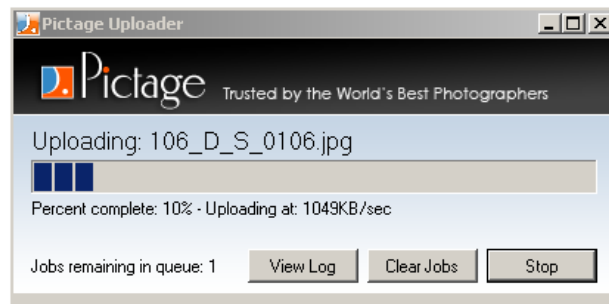
# Upload



Step 1) Begin the upload by selecting the "Export" button within the plug-in.

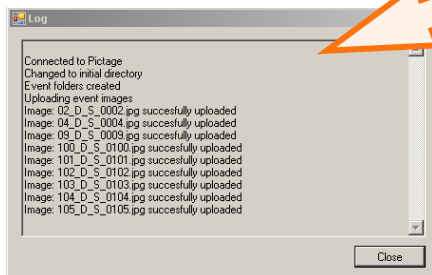
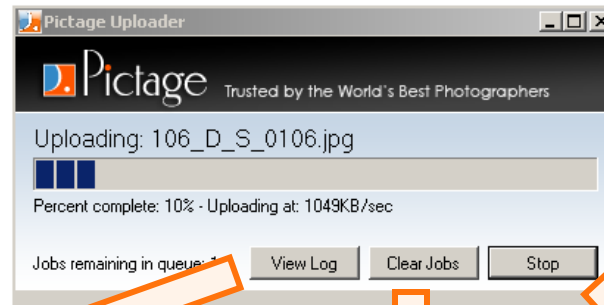


Step 2) Lightroom will then process and export the images with your corrections.

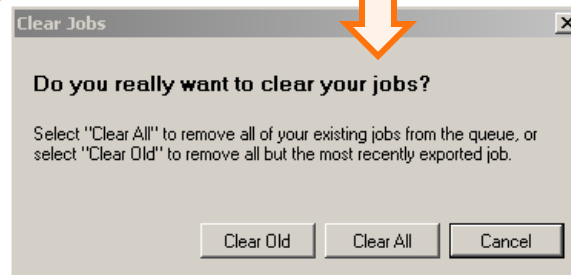


Step 3) The Pictage Uploader is launched and the images are uploaded.

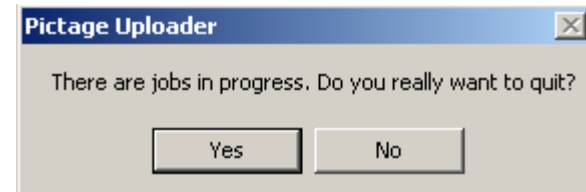
# Pictage Uploader Options



You can view a transcript of the upload progress using the "View Log" option.



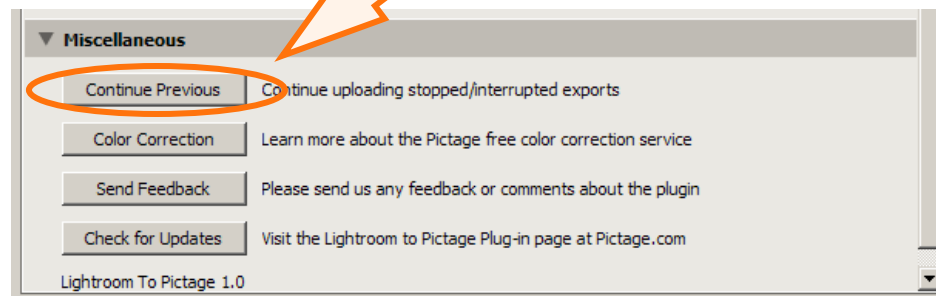
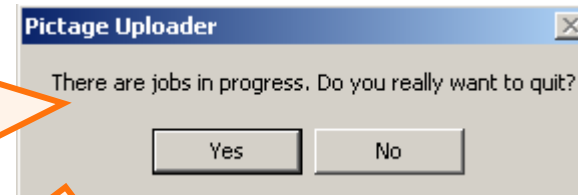
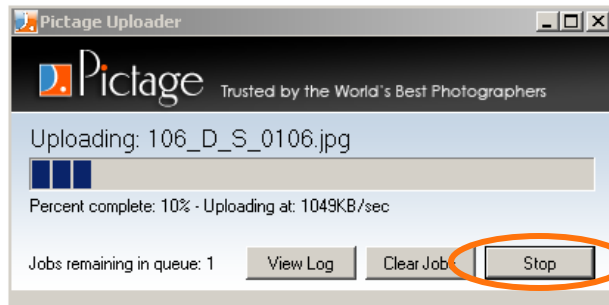
The Pictage Uploader uses a queuing mechanism when multiple jobs are to be processed. If you are uploading multiple jobs, you can select "Clear Old" to remove all but the most recently exported job, or "Clear All" to remove all of the jobs.



Select "Stop" if you want to stop the upload. You can continue where you left off if you select "Continue Previous" from the plug-in.

# Continuing A Previous Upload

Incomplete uploads may be resumed by selecting "Continue Previous" from the plug-in.



# FAQ's

- **I have multiple keywords for each of my images, will these images be uploaded multiple times?**

- No. Your images will be uploaded only once and will be placed in the category specified by your selected keyword (when using the "Pictage-Keyword" syntax) or the first keyword (arranged alphabetically).

- For example:

Image 1 has keywords: **preparation, Pictage:bride, posed**; image 2 has keywords **reception, dance**. Once the event is online, image 1 will be placed (and will only be) in category "bride" because the user added "Pictage-" to the keyword. Image 2 will be placed (and will only be) in category "dance" because alphabetically, "dance" has priority over "reception."

- **How are RAW files handled?**

- **RAW files are automatically converted to the highest quality JPEG prior to uploading on Pictage.**

- **I don't remember my FTP login, how do I obtain this information?**

- Please call Customer Experience by dialing 1-877-PICTAGE

The Pictage logo is located in the bottom right corner of the slide. It consists of the word "Pictage" in a white, sans-serif font, set against a background of a light orange circle that is partially cut off by the right edge of the slide. Below the circle is a solid orange rectangular shape.

Pictage